

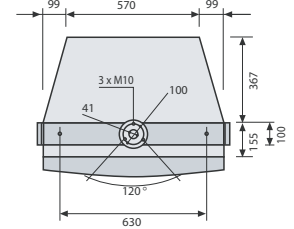
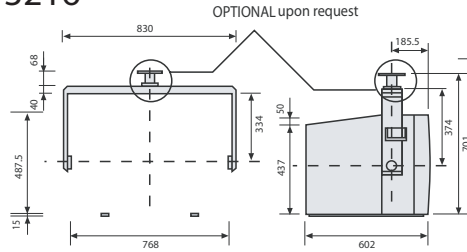


IDTV
21"
29"
32"
34"

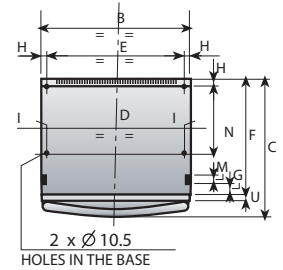
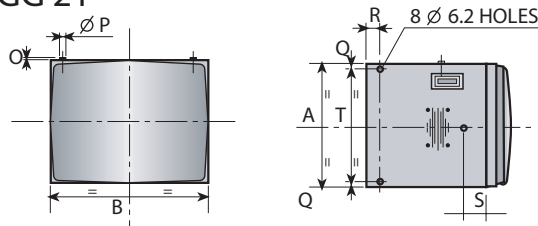


IDTV state-of-the-art professional monitors from Hantarex provide a depth of facilities and flexibility previously unimagined at this price level. The latest generation on-board processing produces 100 kHz flicker-free video from standard 15 kHz video sources, digital freeze frame and zoom, as well as VGA and Super VGA computer displays. Hantarex has provided everything you need to make advanced multimedia presentations easy, using data or video input. There are simultaneous connections for two video sources and a computer, with automatic priority switching between video programme and live data - twin loudspeakers provide high quality sound. With full infra-red remote control of signal source and display settings.

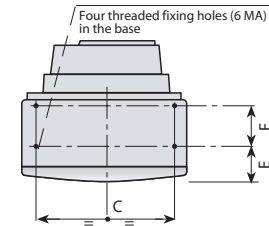
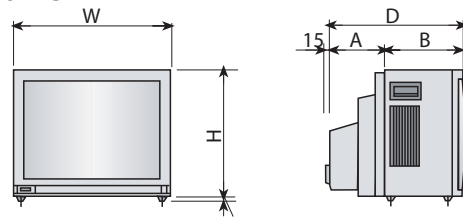
ID 3216"



MGG 21"



CT 29"-34"



MECHANICAL DATA

DIM.	A	B	C	D	E	F	G	H	I	L	M	N	O	P	Q	R	S	T	U
21" mm	370	466	468	436	426	403	30	20	15	30	45	283	5	9.5	15	50	105	340	-

DIM.	W	D	H	A	B	C	E	F
CT 29"	650	478	551	103	240	495	112	143
CT 34"	760	529	661	252	277	704	71	157

MAIN DIMENSIONS AND WEIGHTS TABLE

32"	16:9 - ID	HEIGHT	WIDTH	DEPTH	WEIGHT
		487.5 mm	768 mm	570 mm	69 Kg

MAIN DIMENSIONS AND WEIGHTS TABLE

21"	MGG	HEIGHT	WIDTH	DEPTH	WEIGHT
		370 mm	466 mm	468 mm	29 Kg

MAIN DIMENSIONS AND WEIGHTS TABLE

29"	CT	HEIGHT	WIDTH	DEPTH	WEIGHT
		551 mm	650 mm	478 mm	45.5 Kg

34"	CT	HEIGHT	WIDTH	DEPTH	WEIGHT
		661.5 mm	704.5 mm	529 mm	58.7 Kg

Specifications of products are subject to change without notice.

CONNECTIONS

RGB/Analogue

- 1 Red Input
- 2 Green Input
- 3 Blue Input
- 4 N.C.
- 5 Ground
- 6 Red ground
- 7 Green ground
- 8 Blue ground
- 9 N.C.
- 10 Logic ground
- 11 N.C.
- 12 N.C.
- 13 Horizontal/ -Composite sync
- 14 Vertical sync
- 15 N.C.

RGBI TTL Female D Type Input

- 1 Ground
- 2 N/C
- 3 R/V
- 4 G/Y
- 5 B/U
- 6 N.C.
- 7 N.C.
- 8 Horiz/Comp Sync - Sync on G
- 9 Vertical Sync

Mini Din SVHS input

- 1 Ground
- 2 Ground
- 3 C Chroma 300mV p-p 75
- 4 Y Luma 1V p-p - sync 75

DOT PITCH		CT29 /IDTV3 MGG21 / IDTV3	0.75 mm 0.46 mm	CT34 /IDTV3 ID32/IDTV3	0.92 mm 0.72 mm
HORIZONTAL FREQUENCY		31 - 38 KHz auto-sync - Blanking duration = 4.6 uS			
VERTICAL FREQUENCY		45 - 120 Hz auto-sync - Blanking duration = 550 uS			
COLOR STANDARDS		PAL / SECAM / NTSC 3.58 / NTSC 4.43, P			
VGA STANDARDS		All standards with horizontal scanning frequency equal or less than 38KHz with geometry memory of the following: 640x400 - 640x480 - 800x600 56Hz - 800x600 60 Hz - 1024x768 82Hz interlaced			
SIGNAL INPUT	VIDEO SUPER VHS RGB/YUV VGA AUDIO	2 x BNC with 75 ohm resolution excludable for loop through Vi = 0.5 2 Vpp		2 x mini DIN 4-pin with 75 ohm excludable for loop through Y = 0.5 2 Vpp	
		2 x Dsub9 with 75 ohm excludable for loop through Vi RGB = 0.7 Vpp Positive or negative synchronism 0.7- 5 Vpp, synch on green.		C = 0.35 Vpp Vi YUV = 1 Vpp	
		2 x Dsub-15HD with 75 ohm excludable for loop through Vi = 0.7 Vpp.			
		Separate composite, negative or positive synch, synch on green.			
		2 x RCA AUDIO1 stereo, 2 x RCA AUDIO2 stereo. Can be associated to the video inputs via menu Vi = 200mV rms			
VIDEO BANDWIDTH		25 MHz a -3 dB Rise and fall time = 22 nS			
AUDIO OUTPUT POWER		2 x 6W on internal speakers at 8 ohm CTmodel, or 1 x 6W mono on internal speaker at 8ohm MGG ID model.			
POWER VOLTAGE		180 264 V a.c. 50 Hz		(90 - 130 V a.c. 60 Hz for USA models)	
POWER CONSUMPTION		CT29 IDTV3 / CT34 IDTV3 / ID32 IDTV3 = 160W		MGG21 IDTV3 = 130W	
WORKING TEMPERATURE		From +5°C to +40°C			
SAFETY		Compliance with EN s60950 - X-Ray emission protection			